

WOODAN Caskmarks

HOW TO USE THIS DATABASE

By: Jeroen Oosterbaan
Version: 2026-06-02

Table of Contents

1	SEARCH OPTIONS	1
	CASK MARK TYPE	2
1.1	PRODUCTION MARKS.....	2
1.2	CASK GAUGE MARKS	4
1.3	CONTENT GAUGE MARKS	5
1.4	IDENTIFICATION MARKS	6
1.5	COUNT MARKS	7
1.6	CONTENT QUANTIFICATION MARKS.....	8
2	TABS	9
2.1	HOME	9
2.2	TABLES.....	9
2.3	MAPS.....	9
3	ADD MARKS TO DATABASE	9
4	COLOPHON	9
5	DESCRIPTION OF THE FIELDS	10

1 Search options

WOODAN Caskmarks has been set up to provide an overview of marks on casks and to enable specific searches for particular marks on casks using their associated specifications. A description of the fields is provided under the heading "Description of the fields". You can search by characteristics of the mark, the date of the mark or the design of the mark.

Characteristics of the mark:

- ID Cask mark (Id number of a specific cask mark)
- Town (in which the mark was found)
- Associated product (Dry goods: food, merchandise. Wet goods: Alcoholics, drinks foodstuffs)
- Mark location on cask (Head: inside, Head: outside, Bilge bottom, Bilge center, Bilge center near hole, Unknown, Does not apply)
- Type of mark (Construction Marks, Count mark, Property mark, Gauge mark, Unknown type)
- Context type (Maritime, Urban, Archival source, Countryside)
- Method of application (Timber scribe, Knife, Branding iron, Compass, Painted mark, Ink, Strike mark, Tiber scribe or knife, Unknown)

The date of the mark:

- Startdate and enddate of context



- Startdate and enddate of dendrochronological analyses
- Startdate and enddate of archival source

The design of the mark:

Each mark can be divided into specific elements. These elements can be entered separately into a search field, allowing for easy searching of similarly designed marks. For instance, a hashtag symbol (#) can be searched for by entering “2” in the field Horizontal stripes and “2” in the field Vertical stripes. The search field options are: Horizontal stripes, Vertical stripes, Diagonal stipes, Waving lines, Circles, Half Circles, Dots, Crosses, Numbers, Figures, V-Shapes, W-Shapes and Letters.

Cask mark type

To understand the use and significance of these marks, several types of cask marks were distinguished. These types are categorized based on their intended purpose. The marks served various functions, ranging from quantification and indicating ownership to the gauge or production process. Six main types were identified in total, most of which were further subdivided into subtypes, yielding eleven subtypes overall (Fig. 1).

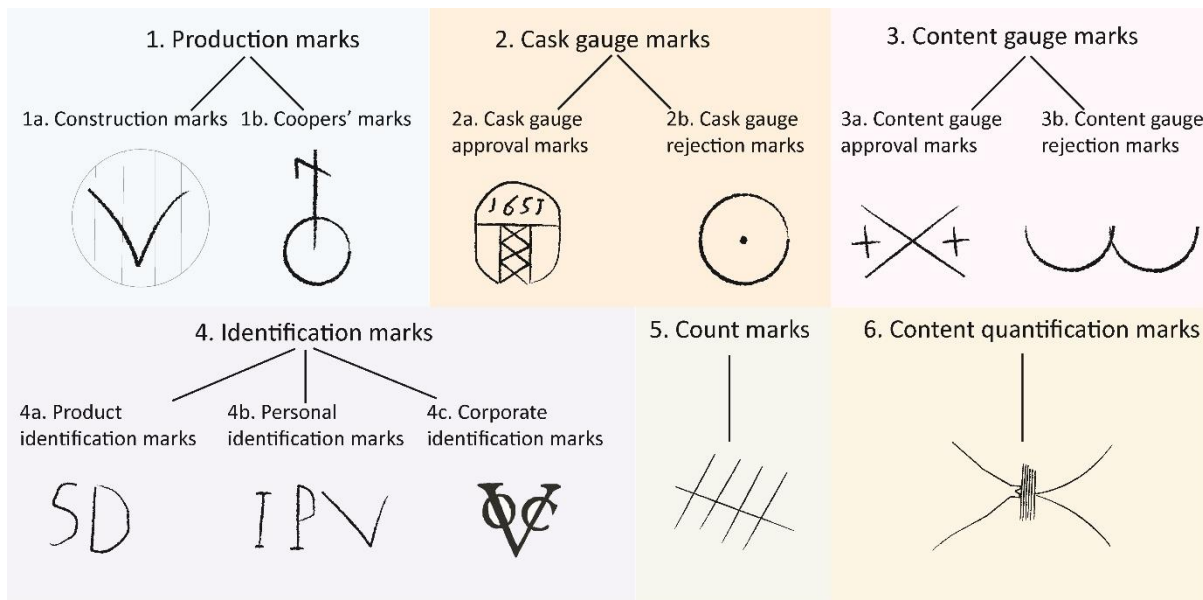


Figure 1: Typology of cask marks, including examples of mark designs.

1.1 Production marks

Production marks were added during the first phase of a casks' lifecycle, known as the production phase, by the coopers who crafted them. These cask marks are divided into construction marks and coopers' marks. Both served a distinct function and have a unique set of features, which are described below.



Type 1a. Construction marks

The construction marks were applied during the production phase or repair of the casks by the cooper (Fig. 2). These marks are found on the bilge or heads of a cask and are usually of a relatively simple design. By marking lines when laying out the staves or head parts, it becomes easy to return a component to its correct place. This type of marking was often made with a knife, though in some cases, a timber scribe was used.



Figure 2: An example of a V shaped construction mark on a head (ID0428).

Type 1b. Coopers' marks

This mark is applied by the cooper after the cask's production process is complete. It serves to quantify the cooper's production and to trace the producer in case of a poorly made cask. The cooper's mark was applied using either a timber scribe or, in some cases, with a knife. This cask mark type, is placed on the inside or outside of the heads of bilge (Fig. 3). The design consists of a monogram or simple combination of lines or circles.



Figure 3: A cooper's mark on the inside of head (ID0641).



1.2 Cask gauge marks

The cask gauge mark was applied to casks at the end of the production phase, in preparation for use as transport containers. This cask mark was part of the gauging process carried out by inspectors (*keurmeesters*, or *branders*) appointed by urban authorities or guild boards. They assessed both the overall quality and the volume capacity of the cask. This inspection was crucial for ensuring the quality of the product being transported.

Type 2a. Cask marks approval marks

The cask gauge approval mark was applied to casks by urban inspectors upon confirmation that the cask met all the requirements of the gauging process. The prescribed dimensions, for instance, had to be checked using certain gauge instruments, a ring, bracket, or calipers. A cask bearing this type of mark could then be used as a transport container (fig.4).



Figure 4: An example cask gauge approval mark with coat of arms of the city of Amsterdam and the year 1651 (ID0908).

Type 2b. Cask marks rejection marks

If a cask did not meet the requirements for that specific cask, the city inspector would apply the cask gauge rejection mark. Rejected casks could be repaired by a cooper, after which the assessment process would be repeated. When the required repairs were completed, the inspector would replace the cask gauge rejection mark with the cask gauge approval mark and the cask would again be fit for use (fig.5).





Figure 5: Cask gauge rejection mark consisting of one circle (ID0573).

1.3 Content gauge marks

Content gauge marks were applied during a casks' use as a transport container, initiating the second phase of a casks' lifecycle. Certain products had to be inspected by officials and had to meet specific quality standards, as was customary with herring where inspectors checked the quality of the fish and ensured it had been properly packing and salted. If the contents of a cask met all regulations, they were approved and the cask was marked with a content gauge approval mark. Conversely, contents that failed to meet the required criteria were rejected and the cask marked with a content gauge rejection mark.

Type 3a. Content gauge approval marks

The content gauge approval mark was applied to casks by inspectors upon confirmation that the contents met all the prescribed requirements of the gauging process. A cask bearing this type of mark could then be transported or traded (Fig.6). The content gauge approval mark assured producers, traders, and consumers that the gauging process had been successfully completed.

Type 3b. Content gauge rejection marks

Inspectors applied the content gauge rejection mark to casks whose contents failed to meet the required standards during the gauging process (Fig.6).



Figure 6: Example of a content gauge approval mark (left, ID0518) and a content gauge rejection marks (right, ID0345).



1.4 Identification marks

Type 4a. Product identification marks

The product identification mark was applied to casks to describe the product it was carrying, and was placed on the casks by the producers of the merchandise (Fig.7).



Figure 7: Example of a product identification mark, ID0010).

Type 4b. Personal identification marks

This type of mark was used in the same way as signatures functioned in the Late Middle Ages and Early Modern period. The marks, thus, are found in a wide range of contexts, for example, on gravestones and house facades, and in personal letters and legal documents (Fig.8).



Figure 8: Example of a personal identification mark, ID0216).



Type 4c. Corporate identification marks

Corporate identification marks were applied by a specific corporate entity and were used to identify the owner of a cask and its contents by that company, or to indicate that the contents of the cask were produced by a specific corporate entity. An example of a corporate identification mark was found on the VOC ship *De Amsterdam*, which sank near Hastings, England, in 1749, and which bore a VOC mark of ownership. Beer casks filled with beer from a particular brewery were also often marked with corporate identification marks (Fig. 9).



Figure 9: An example of a painted corporate identification mark of a brewery (ID0392).

1.5 Count marks

Type 5. Count marks

The count was used to quantify casks or the load they carried (Fig. 10). The design of this cask mark type consists of a system of lines and cross lines. The combination of these lines indicates a number. The count marks are usually applied with either a knife or timber scribe on the bilge or exterior of a head.





Figure 10: An example of a count mark on a stave (ID0777).

1.6 Content quantification marks

Content quantification marks were applied to casks after they arrived at their destination, where the contents were quantified by officials appointed especially for this task. Quantification was necessary because merchants were required to pay market tolls or excise duties to the urban authorities or to those who had leased the excise rights from them, and these tolls were based on quantity. The content quantification marks indicated officially measured contents from which was used to calculate the amount of excise duties required, based on applicable rates (Fig.11).

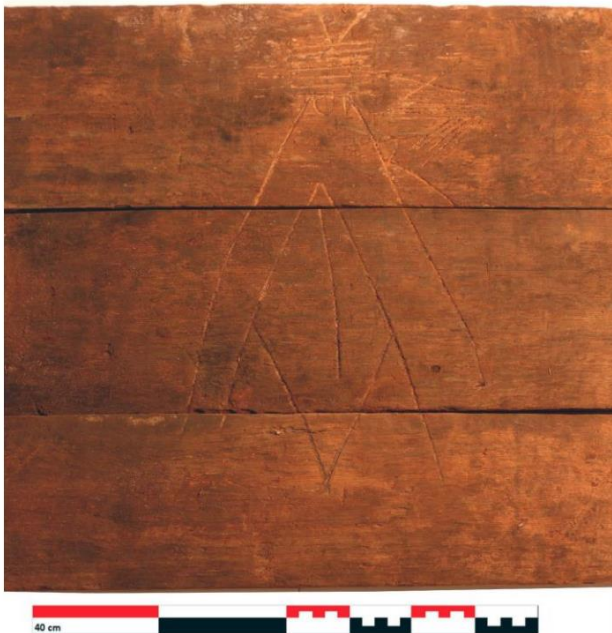


Figure 11: Example of a content gauge mark (wine gauge mark, ID0340).



2 Tabs

2.1 Home

This is the homepage where you can find search fields for the characteristics, date, or design of the mark. The search results will display an image of the mark along with its type and the ID number of the cask mark.

By clicking on any individual cask mark, you can select it. Upon selection, you will be directed to a page displaying all the available information for that particular mark. Often, not every field will have data. By using the 'Show empty fields' option, you can choose to display these fields or keep them hidden.

2.2 Tables

The table tab displays the search results in a tabular format. By default, the table shows the ID number, image, type of cask mark, location of the mark on the cask, method of application, associated product, context type and the municipality where the mark was found. The search field at the top of this tab allows you to search across all available fields in the database, so also fields that aren't shown in the table tab display.

2.3 Maps

The maps tab displays the search results on a map, with each icon representing an individual cask mark. It is advisable to zoom in closely, as many of the cask marks were found in close proximity, causing the icons to often overlap.

3 Add marks to database

New marks can be added to WOODAN caskmarks by completing the input file downloadable from this link. This file can be sent to info@woodan.org. These data will be verified by one of the involved researchers to ensure the reliability of the information in WOODAN Caskmarks. After this verification, the data will be made available online.

4 Colophon

The development of Woodan Caskmarks has been supported by a grant from the *Samenwerkende Maritieme Fondsen* (<https://www.samenwerkendemaritiemefondsen.nl/>).

WOODAN caskmarks is connected to the article: Oosterbaan, J. (in preparation). Marks on Casks.

The database model was made by Jeroen Oosterbaan. Data entry was done by Liam Tran, Wouter Donders and Jeroen Oosterbaan.



5 Description of the fields

All fields of WOODAN Caskmarks are listed in the table below, along with their descriptions, possible options, and field types.

Field name	Field type	Options	Dutch translation	Remark	Field shown in Home tab	Field shown in Tables tab
Cask mark type	Drop-down list		Type tonmerk		x	x
		0. Unknown type	0. Onbekend type			
		1. Production mark	1. Productiemerk			
		1a. Construction mark	1a. Constructiemerk			
		1b. Cooper's mark	1b. Kuipersmerk			
		2. Cask gauge mark	2. Ton ijkmerk			
		2a. Cask gauge approval mark	2a. Ton ijk-goedkeurmerk			
		2b. Cask gauge rejection mark	2b. Ton ijk-afkeurmerk			
		3. Content gauge mark	3. Inhoud ijkmerk			
		3a. Content gauge approval mark	3a. Inhoud ijk-goedkeurmerk			
		3b. Content gauge rejection mark	3b. Inhoud ijk-afkeurmerk			
		4. Identification mark	4. Identificatiemerk			
		4a. Product identification mark	4a. Product identificatiemerk			
		4b. Personal identification mark	4b. Persoonlijk identificatiemerk			
		4c. Company identification mark	4c. Bedrijf identificatiemerk			
		5. Count mark	5. Telmerk			
		6. Content quantification mark	6. Inhoud kwantificatiemerk			
ID-Barrelmark	Numeric, integer		ID		x	x
Mark location on cask	Drop-down list		Locatie van tonmerk (op de ton)		x	x
		Head: inside	Bodem: binnenkant			
		Head: outside	Bodem: Buitenkant			
		Bilge bottom	Buik onderkant			
		Bilge center	Buik centraal			
		Bilge center near hole	Buikcentraal bij gat			
		Unknown	Onbekend			



		Does not apply	Niet van toepassing	Example: marks from archival sources		
Method of application	Drop-down list		Wijze van aanbrengen		x	x
		Timber Scribe	Ritsmes			
		Knife	Mes			
		Branding iron	Brandmerk			
		Compass	Passer			
		Painted mark	Geschilderd merk			
		Ink	Inkt			
		Timber scribe or knife	Ritsmes of mes	When not clear if the mark was placed by either a timber scribe or knife		
		Strike mark	Slagstempel			
		Unknown	Onbekend			
Mark over number of staves	Numeric, integer		Over aantal duigen			
Height (mm)	Numeric, integer		Hoogte (mm)	Length of the mark measured along the length of the stave		
Width (mm)	Numeric, integer		Breedte (mm)	Width of the mark measured along the width of the stave		
Complete cask mark?	Yes / No		Compleet merkteken?			
Context (project name)	Text		Naam onderzoek			
Context type	Drop-down list		Context type		x	x
		Maritime	Maritiem			
		Urban	Stadskern			
		Archival source	Archiefbron			
		Countryside	Buitengebied			
		Unknown	Onbekend			
Town	Text		Plaats		x	x
LongRDX	Numeric, integer		Coördinaat (Longitude, lengtegraad)			
LatRDY	Numeric, integer		Coördinaat (Latitude, breedtegraad)			
Specialist	Text		Specialist (naam)	Name of the specialist who checked or entered the data		
Associated product	Drop-down list		Geassocieerd vervoerd product		x	x



		Dry goods, Food, Other food	Droge waar, Etenswaar, Etenswaar overig			
		Dry goods, Food, Cereals	Droge Waar, Etenswaar, Granen			
		Dry goods, Food, Vegetable	Droge waar, Etenswaar, Groente			
		Dry goods, Food, Herring	Droge waar, Etenswaar, Haring			
		Dry goods, Food, Nuts	Droge waar, Etenswaar, Noten			
		Dry goods, Food, Oil	Droge waar, Etenswaar, Olie			
		Dry goods, Food, Spice	Droge waar, Etenswaar, Specerij			
		Dry goods, Food, Fish other	Droge waar, Etenswaar, Vis overig			
		Dry goods, Food, Meat	Droge waar, Etenswaar, Vlees			
		Dry goods, Food, Fruit	Droge waar, Etenswaar, Vrucht			
		Dry goods, Food, Mollusc	Droge waar, Etenswaar, Weekdieren			
		Dry goods, Food, Seeds	Droge waar, Etenswaar, Zaden			
		Dry goods, Food, Salmon	Droge waar, Etenswaar, Zalm			
		Dry goods, Food, Dairy food	Droge waar, Etenswaar, Zuivelproduct			
		Dry goods, Merchandise, Fuel	Droge waar, Handelswaar, Brandstof			
		Dry goods, Merchandise, Other raw material	Droge waar, Handelswaar, Grondstof overig			
		Dry goods, Merchandise, Other merchandise	Droge waar, Handelswaar, Handelswaar overig			
		Dry goods, Merchandise, Gunpowder	Droge waar, Handelswaar, Kruit			
		Dry goods, Merchandise, Cloth	Droge waar, Handelswaar, Laken			
		Dry goods, Merchandise, Metals	Droge waar, Handelswaar, Metalen			
		Dry goods, Merchandise, Stone	Droge waar, Handelswaar, Natuursteen			
		Dry goods, Merchandise, Pitch	Droge waar, Handelswaar, Pek			
		Dry goods, Merchandise, Tobacco	Droge waar, Handelswaar, Tabak			
		Dry goods, Merchandise, Tar	Droge waar, Handelswaar, Teer			
		Dry goods, Merchandise, Soap	Droge waar, Handelswaar, Zeep			
		Wet goods, Alcoholics, Beer	Natte waar, Alcoholische dranken, Bier			
		Wet goods, Alcoholics, Other distilled drinks	Natte waar, Alcoholische dranken, Gedestilleerd overig			
		Wet goods, Alcoholics, Mead	Natte waar, Alcoholische dranken, Mede			
		Wet goods, Alcoholics, Wine	Natte waar, Alcoholische dranken, Wijn			
		Wet goods, Drinks, Water	Natte waar, Dranken, Water			



		Wet goods, Foodstuffs, Vinegar	Natte waar, Etenswaar, Azijn		
		Wet goods, Foodstuffs, Other foodstuffs	Natte waar, Etenswaar, Etenswaar overig		
		Wet goods, Foodstuffs, Dairy product	Natte waar, Etenswaar, Zuivelproduct		
		Wet goods, Textile industry, Other	Natte waar, Textielindustrie, Overig		
Tranche ID	Numeric, integer		Werkputnummer		
Feature ID	Numeric, integer		Spoornummer		
Find ID	Numeric, integer		Vondstnummer		
WOODAN ID	Numeric, integer		WOODAN ID	Link to WOODAN site	
Archis ID	Numeric, integer		Archis-nummer		
Date context start	Numeric, integer		Datering context, start		x
Date context end	Numeric, integer		Datering context, einde		x
Date history start	Numeric, integer		Datering archiefbron, start		
Date history end	Numeric, integer		Datering archiefbron, einde		
Date dendro start	Numeric, integer		Datering dendro, start		x
Date dendro end	Numeric, integer		Datering dendro, einde		x
Provenance	Drop-down list		Herkomst hout		
		Rhineland	Rijnland		
		Meuse valley / Germany	Maasvallei / Duitsland		
		North German plane	Noord-Duitse Laagvlakte		
		Poland	Polen		
		Baltic region	Balticum		
		Southern Scandinavia	Zuid-Scandinavië		
		England	Engeland		
		France	Frankrijk		
		France, Loire valley	Frankrijk, Loirevallei		
		France, Burgundy	Frankrijk, Bourgogne		
		Liechtenstein	Liechtenstein		
		Tropical hardwood	Tropisch hardhout		
		Eastern Poland / Belarus	Oost-Polen / Wit-Rusland		
		Belgium	België		
		Unclear	Onduidelijk		
		Not determined	Niet bepaald		
Sapwood	Yes / No		Spinthout aanwezig?		
Dendro Dataverse	Numeric, integer		Dendro dataverse nummer	Link to dataverse site	



Associated Person Name	Text		Geassocieerd persoon, naam		
Associated Function Name	Text		Geassocieerde functie, naam		
Reference	Text		Bronvermelding	x	
Remarks	Text		Opmerkingen		
Horizontal stripes	Numeric, integer		Horizontale strepen	x	
Vertical Stripes	Numeric, integer		Verticale strepen	x	
Diagonal stripes	Numeric, integer		Diagonale strepen	x	
Waving lines	Numeric, integer		Wavinge lenen	x	
Circles	Numeric, integer		Cirkels	x	
Half Circles	Numeric, integer		Halve cirkels	x	
Dots	Numeric, integer		Punten	x	
Crosses	Numeric, integer		Kruizen	x	
Numbers	Numeric, integer		Nummers	x	
Figures	Numeric, integer		Figuren	x	
V-shapes	Numeric, integer		V-vormen	x	
W-shapes	Numeric, integer		W-vormen	x	
Letters	Text		Letters	x	

